



Stream Protection Project - Landholder incentives 2022/23

Central Tablelands Local Land Services supports land managers and community in working together to build resilient communities in productive healthy landscapes.

The Stream Protection Project assists private land managers to improve the condition of their environmental assets within priority areas across the Central Tablelands region.

What can I apply for?

The Stream Protection Project provides incentive funding and technical support for the following on-ground activities:

- Stock-proof fencing to control stock access to project areas.
- Alternative stock watering points where stock access to water will be lost due to new fencing.
- Targeted planting of native trees and shrubs to enhance stream protection.
- Stewardship payment of a one-off payment where stock are excluded from the project area.

Who is eligible for funding?

Land managers with properties on named streams of 500 metres or more in length located within the priority areas across the Central Tablelands region are eligible.

The project is being rolled out across the southern and eastern portions of the Central Tablelands. See figure 1.

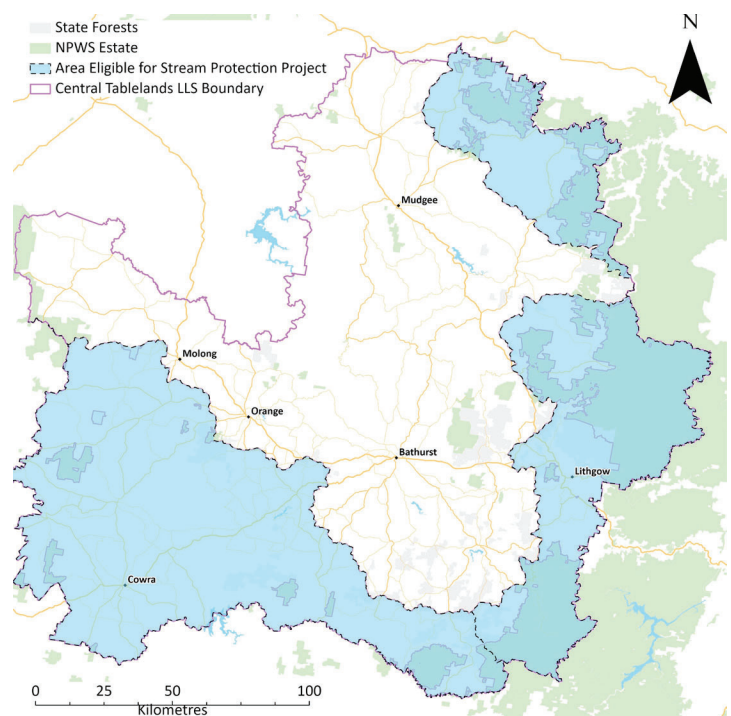


Figure 1: eligible named streams - [click for an interactive map](#)



How can I apply?

Expressions of Interest (EOIs) open on Wednesday 3 August 2022 and close Sunday 28 August 2022.

To apply you will need to:

1. Review the full project standards and eligibility criteria available on our [website](#)
2. Complete and submit an online EOI form via our [website](#) or scan the QR code below



Or visit your nearest Central Tablelands Local Land Services Office for assistance.

Once you have submitted your EOI, an officer will review your submission and contact you to discuss your project (should your submission align with the project requirements) and to organise a property inspection.

During the property inspection, the officer will assist in developing your potential project whilst assessing the overall potential environmental benefits.

The environmental benefit score from your project assessment will be used to rank all projects received.

Funding offers will subsequently be made for all eligible projects (based on ranking) until all funding is exhausted.

Should you accept your project funding offer, a Land Management Agreement will be created for your review.

Once the agreement has been signed, you will be required to complete the agreed on-ground activities by the due date stipulated in your agreement and you must manage the site (as per project standards) for no less than 10-year period from the agreed due date.

Eligibility criteria and project standards

To be eligible for funding all projects must meet the following criteria and standards:

- **Project Implementation time** - You must complete your project by 31 May 2023.
- **Current contractual and financial arrangements** – Any Central Tablelands Local Land Services or previous Catchment Management Authority agreements must be complete, and payment of any Local Land Services rates need to be up to date. Public liability insurance to the value of AUD\$10 million dollars is also required.
- **Stock-proof fencing** – constructed with new materials and maintained throughout the life of the project (10 years). Conventional 6 line or electric 3-line fencing minimum, preferably without barbed wire. Boundary or exclusion fencing will not be funded. All new fencing must be constructed at a minimum width of 10 metres from the top of the bank over the length of the project site. You must maintain vehicle access on the inside of the fenced area along its length (for maintenance and weed control).
- **Exotic plant and pest animal control** – pest animals and exotic plants must be controlled within the site for the duration of the agreement
- **Grazing management** – strategic grazing within the project area may be permitted subject to approval by LLS staff.
- **Retention of existing habitat features** – such as extruded rocks, dead standing and fallen timber within the site, remnant native vegetation etc.
- **Planting and site preparation** - a project specific plan will be developed with an LLS officer that will cover site preparation, species selection, planting and ongoing future maintenance etc.

A comprehensive list of the project standards is available on our [website](#) and will be discussed with you during the site visit.

For more information, contact:

Katie McPherson
Land Services Officer
M: 0460 897 275
E: katie.a.mcpherson@lls.nsw.gov.au