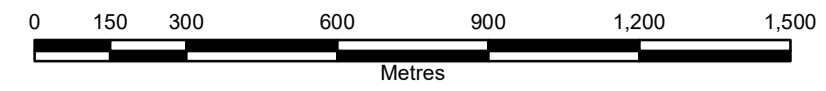
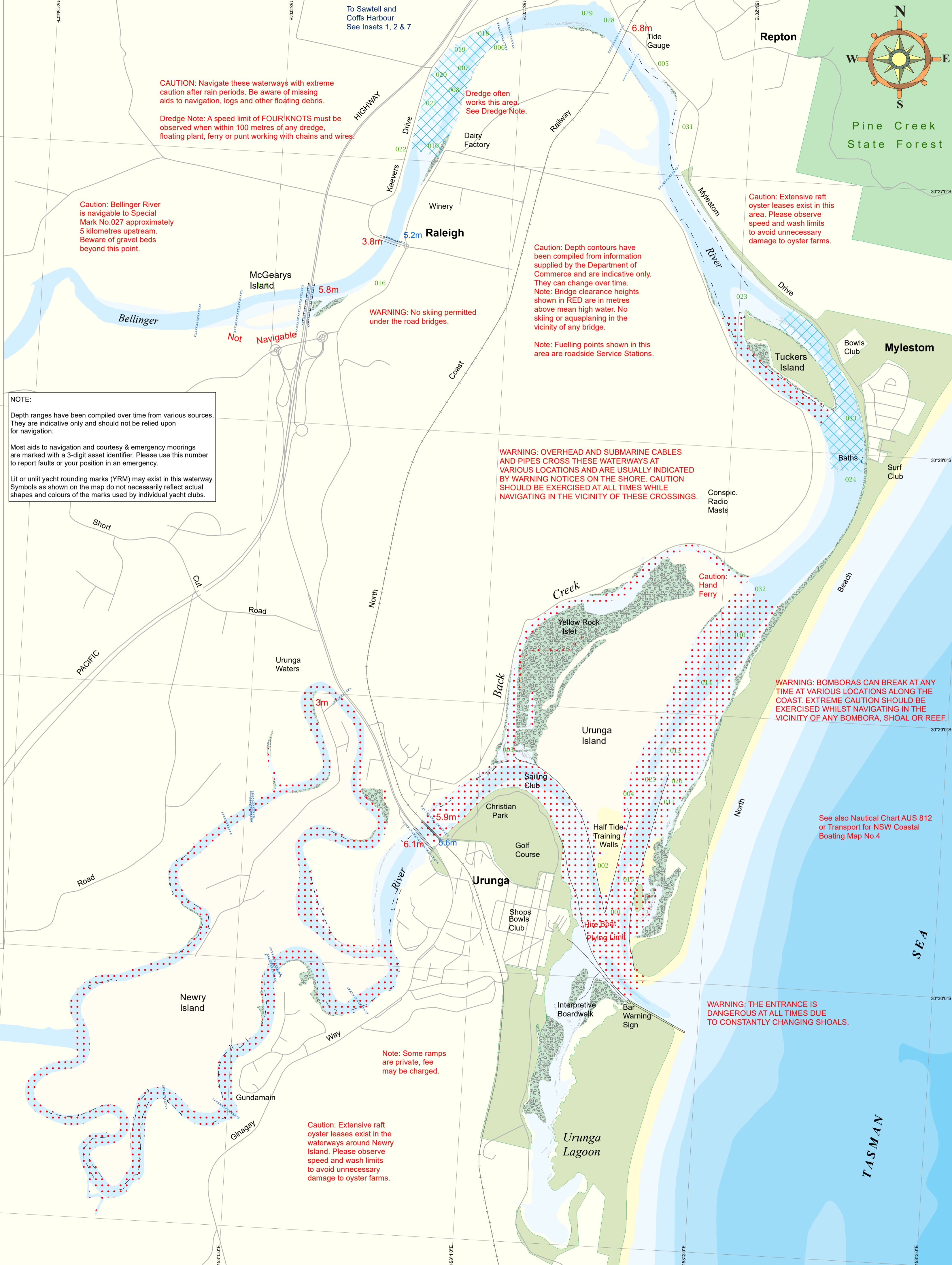
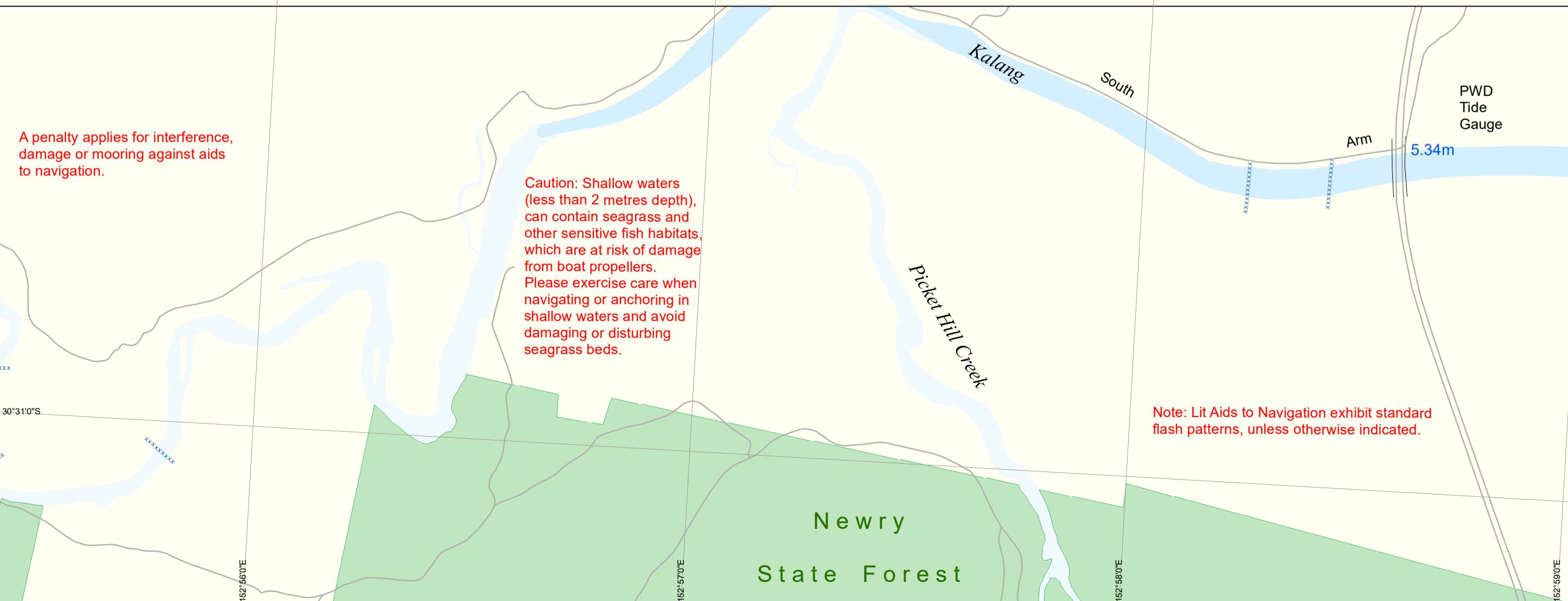
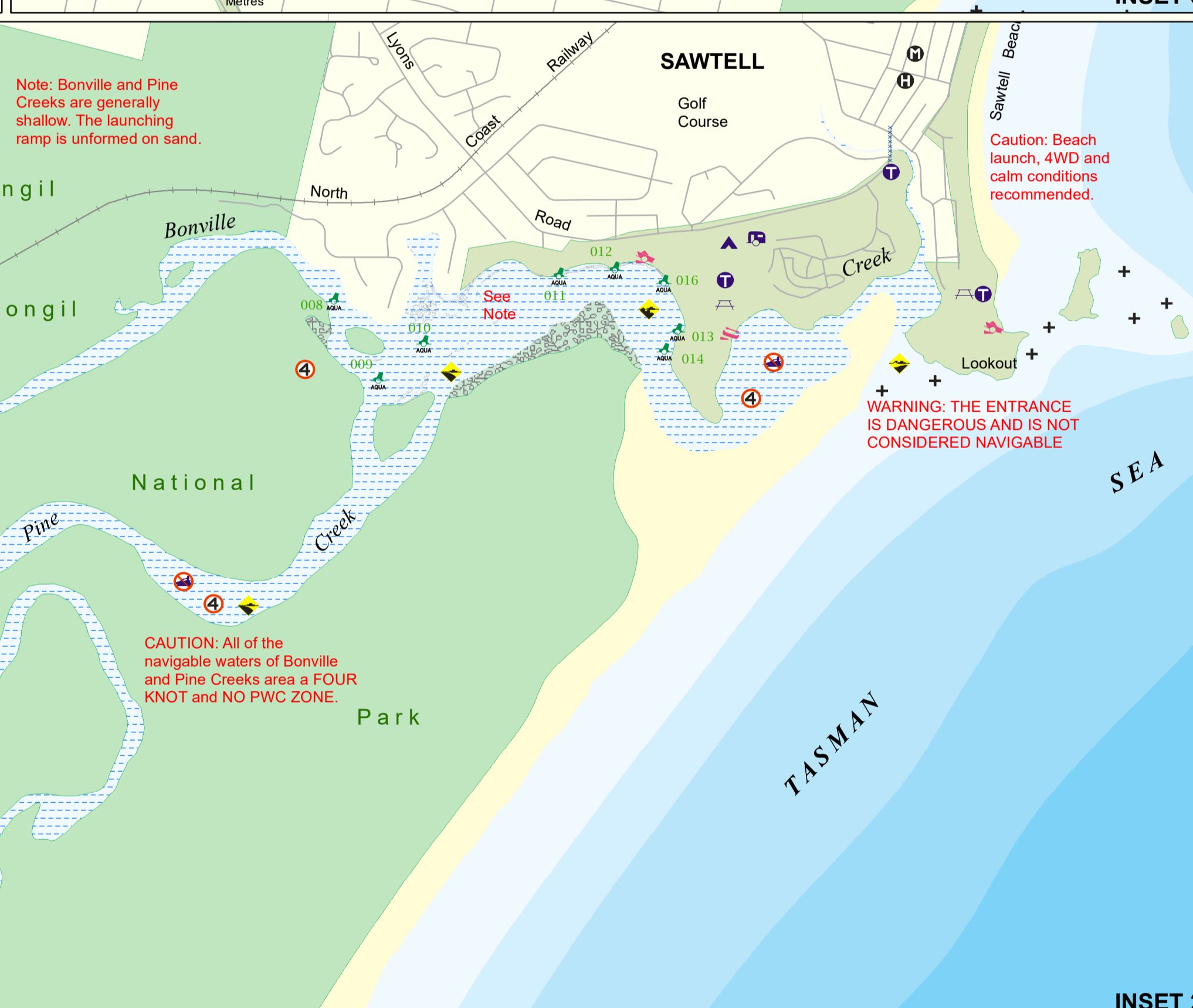


**Map of Coffs Harbour Area, including Bellinger, Kalang and Corini Rivers, Woolgoolga and Arrawarra Beaches**



- |  |  |  |
|--|--|--|
| <b>Restricted Activities and Cautions</b>  | <b>Restricted Waters</b>   | <b>Aids to Navigation</b>  |
| <ul style="list-style-type: none"> <li>⚠ Dangerous Area Breaks at Times</li> <li>⚠ Visible Wreck</li> <li>⚠ Caution Entrance Bar Crossing</li> <li>⚠ Caution Shallow Water</li> <li>⚠ Caution Submerged Rocks</li> <li>⚠ Warning Overhead Power Cables</li> <li>⚠ All or Power Boats Prohibited Area</li> <li>⚠ Eight Knot Speed Limit Area</li> <li>⚠ Four Knot Speed Limit Area</li> <li>⚠ No Towing Area</li> <li>⚠ No Wash Area</li> <li>⚠ PWC Restriction - No Irreg. Riding</li> <li>⚠ Personal Water Craft Prohibited</li> <li>⚠ Formed Surface Launching Ramp</li> <li>⚠ Unformed or Hand Launching Area</li> <li>⚠ Helms, Beached or Boat Hire</li> <li>⚠ Public Wharf, Jetty or Landing</li> <li>⚠ Courtesy Mooring</li> </ul> | <ul style="list-style-type: none"> <li>➡ Recommended Navigation Path</li> <li>➡ Leadline</li> <li>➡ Structure</li> <li>➡ Cable Crossing</li> <li>➡ 4 Knots Zone</li> <li>➡ 8 Knots Zone</li> <li>➡ No Tow of Persons</li> <li>➡ Seagrass</li> <li>➡ Point of Interest</li> <li>➡ Camping Ground</li> <li>➡ Caravan Park</li> <li>➡ Fuel Available</li> <li>➡ Hospital</li> <li>➡ Motel</li> <li>➡ Evacuation Area</li> <li>➡ Marine Rescue</li> <li>➡ Picnic Ground</li> <li>➡ Post Office</li> <li>➡ Public Telephone</li> <li>➡ Public Toilet</li> <li>➡ Tourist Information Centre</li> <li>➡ Transmitting Tower</li> <li>➡ Fish Cleaning Facility</li> </ul> | <ul style="list-style-type: none"> <li>⚓ Blue light - beacon</li> <li>⚓ No Danger - Can Buoy</li> <li>⚓ Lt Port - Beacon with TM</li> <li>⚓ Lt Special Mark - Pillar Buoy</li> <li>⚓ Lt Starboard - Aqua Buoy</li> <li>⚓ Lt Starboard - Beacon with TM</li> <li>⚓ Lt Sbd Buoy - No Top Mark</li> <li>⚓ Lt East - cardinal beacon</li> <li>⚓ Lt lead - oblong beacon</li> <li>⚓ Lt port beacon - no top mark</li> <li>⚓ Lt port beacon - no top mark</li> <li>⚓ Port Buoy - No Top Mark</li> <li>⚓ Port pipe - beacon</li> <li>⚓ Special - pile beacon</li> <li>⚓ Special Mark - Aqua Buoy</li> <li>⚓ Special pipe - beacon</li> <li>⚓ Starboard - Aqua Buoy</li> <li>⚓ Starboard Buoy - No Top Mark</li> <li>⚓ Starboard pipe - beacon</li> <li>⚓ 5th cardinal - pipe beacon</li> <li>⚓ White light - beacon</li> <li>⚓ Yellow light - beacon</li> </ul> |

Disclaimer - This map is not intended to be used for navigational purposes and Transport for NSW takes no responsibility for the accuracy of the content herein.  
Map Printed: October 2021 Copyright Transport for NSW



Pine Creek State Forest

Mylestom

Urunga

Urunga Lagoon

Newry State Forest